

ELECTRIC / HYDRAULIC SERVICE CRANE **PSC 5025**

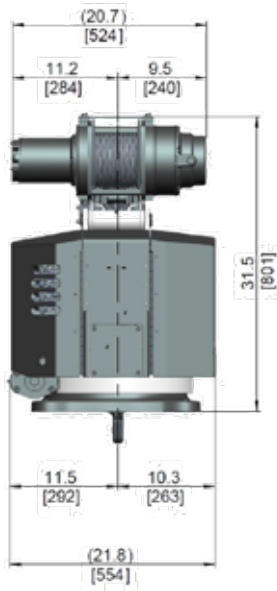
Superior Lifting System

LIFETIME EXCELLENCE



FEATURES

Meeting or exceeding all ASME and OSHA standards, PSC 5025 an Electric/Hydraulic, or Full Hydraulic Service Crane with 5,000 lbs. capacity. Just like all of our Service Crane models, PSC 5025 features Wireless Proportional Control, Single Weld Hexagonal Boom design exclusively E-coated by PALFINGER for the best rust protection in the industry.



WINCH

Planetary winch standard for speed, durability, and higher duty cycle. Boom mounted winch for consistent line length when raising or lowering boom.



PROPORTIONAL WIRELESS CONTROL

Push button style proportional wireless remote control, standard. Proportional control of all hydraulic functions is standard on all models.



HEXAGONAL BOOMS

Maintenance free high tensile strength self-centering single weld boom sections powered by internal extension cylinders.



CYLINDERS

All cylinders are E-coated and use a 5 stage marine grade seal system, exceeding ANSI B30.5 requirements.



INDUSTRY LEADING WARRANTY

2 years on all components, 3 year warranty on structural components.

IWC - INTELLIGENT WINCH CONSOLE

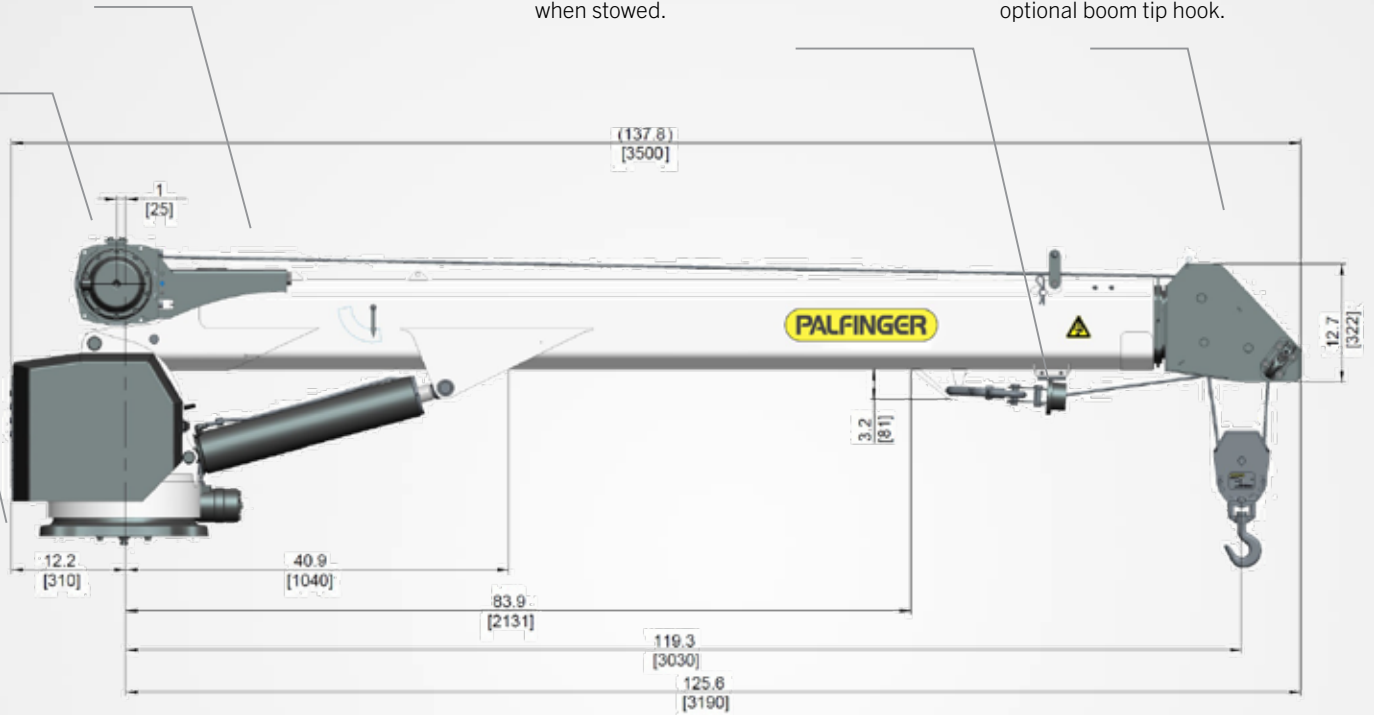
Two Block Damage Prevention System is integrated into winch mounting platform eliminating the need for boom tip apparatus and cord reel. Complies with ANSI B30.5

LOAD BLOCK STOWING BRACKET

Bracket and pads designed to keep load block from contacting the boom when stowed.

HORSE HEAD

No bail and limit switch to interfere in operation, low profile design, and optional boom tip hook.



E-COAT PROTECTION

Most rust resistant telescopic crane on the market.



MEDIA BLAST

A high quality exterior process that removes any surface imperfections and provides an optimized surface for E-coating.

E-COAT

Automotive grade and environmentally friendly coating process is applied with precision over the entire product ensuring superior corrosion protection.

TOP COAT

All E-coated steel components receive a white top coat finish that ensures maximum durability.





TECHNICAL SPECIFICATIONS

CRANE RATING

Rated lifting moment	32,500 ft. lbs. (44.2 kNm (4.5 mt))
Maximum lifting moment	34,580 ft. lbs. (49.3 kNm (5.0 mt))
Hydraulic outreach	25.0 ft. (7.6 m)
Crane weight Electric	1,170 lbs. (530 kg)
Crane weight Hydraulic	1,155 lbs. (525 kg)
Hydraulically powered extensions	

CONTROL SYSTEM

Wireless remote control unit	
Integrated E-stop button	
Manual valve activation capability	
Integrated warning horn	
12V DC power supply	

ROTATION SYSTEM

Slewing torque	4,057 ft. lbs. (5.5 kNm (0.6 mt))
Slewing angle Electric	Continuous rotation
Slewing angle Hydraulic	410° rotation

STANDARDS (meets or exceeds)

Crane	ANSI B30.5	OSHA 1910.28
Calculation	EN 12999 H1,B6	

PLANETARY GEAR WINCH

Max. winch force single line	2,500 lbs. (1,134 kg)
Max. winch force double line	5,000 lbs. (2,268 kg)
Max. line speed	20 ft./min (6.1 m/min)
Galvanized aircraft cable	95' x 5/16" (28.9 m x 7.9 mm)
Two-block damage prevention system	
3rd wrap end stop system option	

HYDRAULIC SYSTEM

Operating pressure	2,800 psi (19.3 Mpa (193 bar))
Required oil flow Hydraulic	5.2 GPM (20.0 L/min)
Electronic overload protection system	
Marine grade 5 seal system on all cylinders	
Non integrated load-holding valves on all cylinders	

CRANE | CHASSIS INTERFACE

Base plate dimension	17.75" x 17.75" (450 mm x 450 mm)
Hole pattern	14.75" x 14.75" (375 mm x 375 mm)
Mounting bolts	4 x 1" -8 UNC

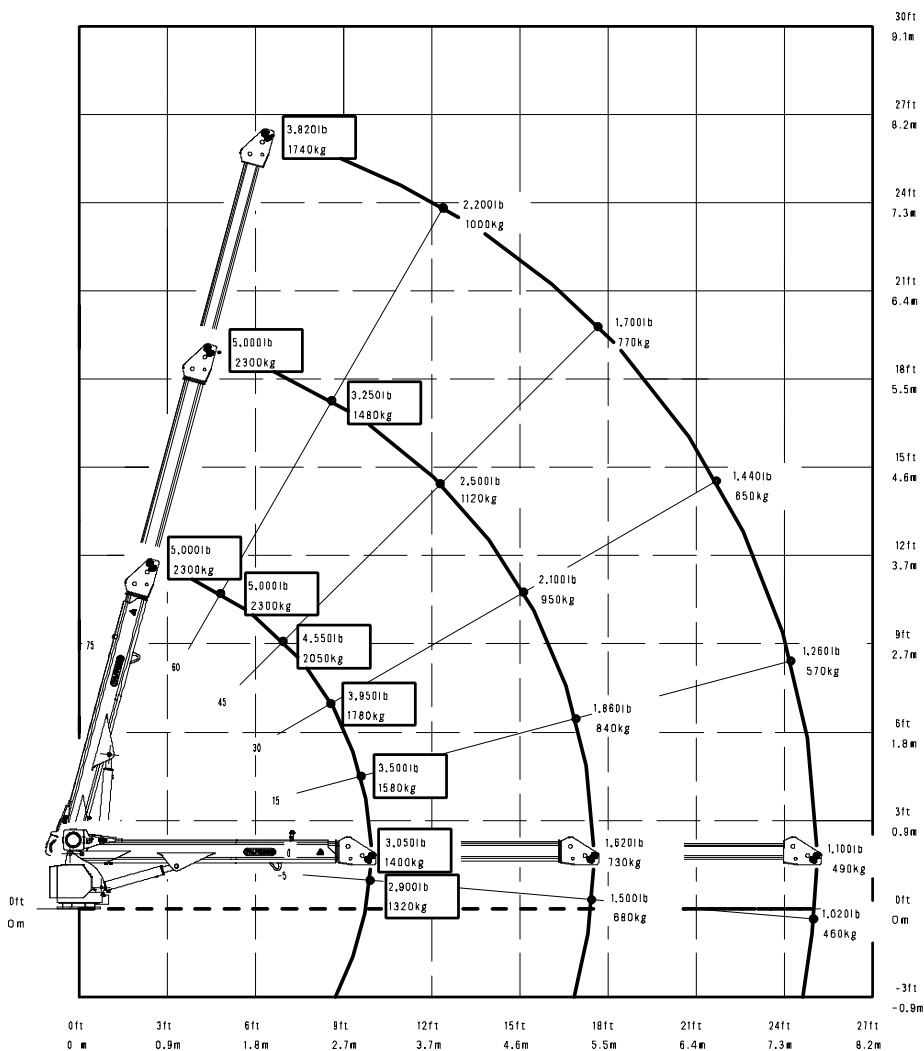
CHASSIS RECOMMENDATION

Chassis style	Conventional
Recommended GVWR	Class 4 (14,001 lbs. (6,350 kg))

Weights of load-handling devices are part of the load lifted and must be deducted from the capacity.

....lbs
....kg

Boxes denote two-part line required.



SERVICE CRANE

OPTIONS

Many optional features are available for PALFINGER Service Cranes to meet your demands on the job. Contact your PALFINGER Representative to learn more!



PERSONNEL BASKET - CRANE ACCESSORY - PATENT PENDING

Industry-first from PALFINGER designed specifically for Service Cranes with 5,000 lbs. capacity and above. Quickly set up and attach basket to crane for maximum efficiency on the job. Folds into a compact storage box and mounts onto the body for transport.

Personnel Basket Capacity:	300 lbs.
Personnel Basket Weight:	280 lbs.
Complete Installation (incl. Boxes):	400 lbs.



AUDIBLE CAPACITY WARNING

105 db warning begins at 90% of load capacity and increases until crane reaches overload condition. Exceeds ANSI B30.5.



BOOM TIP HOOK

1.5 ton capacity boom tip hook, horsehead has threaded weldment for mounting.



THIRD WRAP LIMITING SYSTEM

Integrated system prevents wire rope spool off, ensuring three wraps remain on drum, exceeding ANSI B30.5.

SERVICE CRANE

PRODUCT RANGE

TECHNICAL SPECIFICATIONS

MODEL	CAPACITY	RATED LIFTING MOMENT	MAX LIFTING MOMENT	BOOM EXTENSIONS	POWER OUTREACH	WINCH SPEED	STANDARD WEIGHT	CHASSIS SPECIFICATION
PSC 3216 E	4,000 lbs. (1814 kg)	12,500 ft. lbs. (17 kNm (1.7 mt))	14,560 ft. lbs. (19.6 kNm (2.0 mt))	1 Hydraulic + 1 Manual (2 Hydraulic Option)	11.4 ft. (16 ft.) 3.5 m (4.9 m)	18.0 ft./min (5.5 m/min)	650 lbs. (295 kg)	Class 3
PSC 3216 H	4,000 lbs. (1814 kg)	12,500 ft. lbs. (17 kNm (1.7 mt))	14,560 ft. lbs. (19.6 kNm (2.0 mt))	1 Hydraulic + 1 Manual (2 Hydraulic Option)	11.4 ft. (16 ft.) 3.5 m (4.9 m)	28.0 ft./min (8.5 m/min)	630 lbs. (286 kg)	Class 3
PSC 4016 E	4,000 lbs. (1814 kg)	18,500 ft. lbs. (25.1 kNm (2.6 mt))	23,235 ft. lbs. (31.4 kNm (3.2 mt))	1 Hydraulic + 1 Manual (2 Hydraulic Option)	11.4 ft. (16 ft.) 3.5 m (4.9 m)	18.0 ft./min (5.5 m/min)	650 lbs. (295 kg)	Class 3
PSC 4016 H	4,000 lbs. (1814 kg)	18,500 ft. lbs. (25.1 kNm (2.6 mt))	23,235 ft. lbs. (31.4 kNm (3.2 mt))	1 Hydraulic + 1 Manual (2 Hydraulic Option)	11.4 ft. (16 ft.) 3.5 m (4.9 m)	40.0 ft./min (12.2 m/min)	630 lbs. (286 kg)	Class 3
PSC 4025 E	4,000 lbs. (1814 kg)	18,500 ft. lbs. (25.1 kNm (2.6 mt))	20,585 ft. lbs. (27.9 kNm (2.9 mt))	2 Hydraulic	25 ft. (7.6 m)	19.0 ft./min (5.8 m/min)	1010 lbs. (458 kg)	Class 3
PSC 4025 H	4,000 lbs. (1814 kg)	18,500 ft. lbs. (25.1 kNm (2.6 mt))	20,585 ft. lbs. (27.9 kNm (2.9 mt))	2 Hydraulic	25 ft. (7.6 m)	40.0 ft./min (12.2 m/min)	995 lbs. (451 kg)	Class 3
PSC 5025 E	5,000 lbs. (2286 kg)	32,500 ft. lbs. (44.2 kNm (4.5 mt))	34,580 ft. lbs. (49.3 kNm (5.0 mt))	2 Hydraulic	25 ft. (7.6 m)	19.0 ft./min (5.8 m/min)	1170 lbs. (530 kg)	Class 4
PSC 5025 H	5,000 lbs. (2286 kg)	32,500 ft. lbs. (44.2 kNm (4.5 mt))	34,580 ft. lbs. (49.3 kNm (5.0 mt))	2 Hydraulic	25 ft. (7.6 m)	34.0 ft./min (10.3 m/min)	1155 lbs. (525 kg)	Class 4
PSC 6025 E	6,000 lbs. (2750 kg)	38,500 ft. lbs. (52.2 kNm (5.3 mt))	43,730 ft. lbs. (58.0 kNm (5.9 mt))	2 Hydraulic	25 ft. (7.6 m)	23.0 ft./min (7.0 m/min)	1280 lbs. (580 kg)	Class 4
PSC 6025 H	6,000 lbs. (2750 kg)	38,500 ft. lbs. (52.2 kNm (5.3 mt))	43,730 ft. lbs. (58.0 kNm (5.9 mt))	2 Hydraulic	25 ft. (7.6 m)	52.0 ft./min (15.8 m/min)	1230 lbs. (560 kg)	Class 4
PSC 4329 H	8,000 lbs. (3650 kg)	43,000 ft. lbs. (58.3 kNm (5.9 mt))	49,180 ft. lbs. (66.5 kNm (6.8 mt))	2 Hydraulic	29.1 ft. (8.9 m)	60 ft./min (18.2 m/min)	2149 lbs. (975 kg)	Class 5
PSC 6229 H	10,800 lbs. (4900 kg)	62,000 ft. lbs. (84.1 kNm (8.6 mt))	68,900 ft. lbs. (93.2 kNm (9.5 mt))	2 Hydraulic	29.1 ft. (8.9 m)	60 ft./min (18.2 m/min)	2407 lbs. (1092 kg)	Class 6
PSC 7229 H	12,500 lbs. (5700 kg)	72,00 ft. lbs. (97.6 kNm (10 mt))	79,450 ft. lbs. (107.7 kNm (11 mt))	2 Hydraulic	29.1 ft. (8.9 m)	60 ft./min (18.2 m/min)	2731 lbs. (1239 kg)	Class 6
PSC 8629 H	14,000 lbs. (6400 kg)	86,000 ft. lbs. (116.6 kNm (11.9 mt))	94,676 ft. lbs. (128.4 kNm (13 mt))	2 Hydraulic	29.1 ft. (8.9 m)	60 ft./min (18.2 m/min)	2833 lbs. (1285 kg)	Class 7



OS - PSC5025+E / E 03 / 18

Cranes shown in the leaflet are partially optional equipped and do not always correspond to the standard version. All PSC models are subject to change as PALFINGER updates, improves, and technologically advances their cranes and the industry.

Omaha Standard Palfinger
3501 S. 11th Street | Council Bluffs, IA
51501-0876 | USA
T + 1 800 279 2201

PALFINGER.COM